

October 2025

# City of Madelia

## Center Ave Reconstruction has Hit Main Street

Construction on Main Street began Sept. 15 as part of the Center Avenue Reconstruction project. We know the work is creating real disruptions for commuters, customers, and downtown businesses — thank you for your patience.

Please support our Main Street merchants while access is limited: sidewalk access to businesses remains open, Sunshine Foods can be reached via Center Avenue, and small gestures (shopping in person, ordering carryout, using curbside pickup, or sharing a local business post on social media) make a big difference. If you can, park a little farther away to leave nearby spaces for folks with mobility needs, and please follow detour signs and watch for crews for everyone's safety.

The project is expected to take about 50 working days, with the goal of having a hard surface in place by October 24.

For the latest detour maps, meeting recordings, and other updates, visit:

[www.madeliamn.com/center-avenue-reconstruction-project](http://www.madeliamn.com/center-avenue-reconstruction-project).

Thank you to our businesses for their flexibility — and thank you to the community for showing up and supporting them during this temporary disruption.



**Prepare for Tomorrow Today through CodeRED**

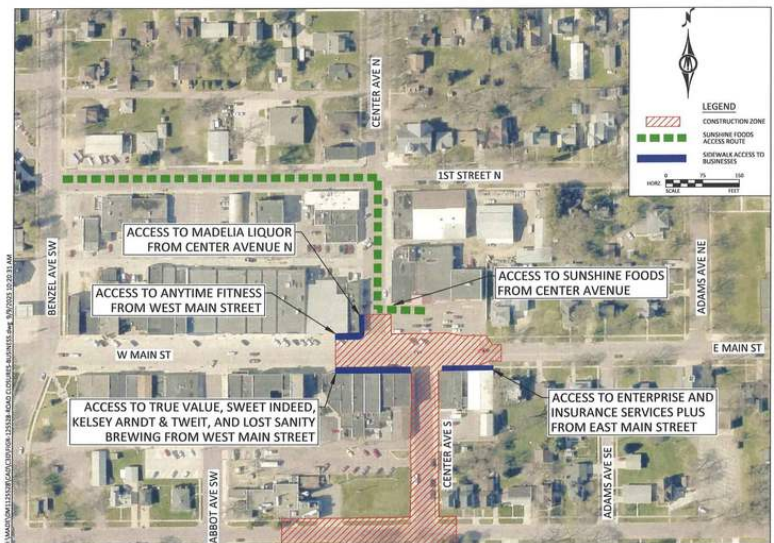
To sign up for weather alerts, street closures, and other notifications, visit

<https://public.coderedweb.com/cne/en-US/9C62A1CC5D20>

or visit the City of Madelia's website and click on the Code Red link at the bottom of the homepage. Alerts are available through call, text, or email.

Center Avenue Improvements  
City of Madelia, MN

Business Access Routes  
September 2025  
BOLTON & MENK



## Help Shape Future Housing in Madelia!

Watonwan County is in the process of obtaining a new Housing Study. The Housing Study will assist the County in prioritizing future housing directives. The survey should take approximately 10-15 minutes to complete. There is an online version of the survey which can be found by accessing the QR code



or you can use this link: <https://tinyurl.com/WatonwanHousing>

Completed hard-copy surveys can be returned to the St. James City Hall at 1205 6th Ave S in St. James or the **Madelia City Hall at 18 Drew Ave NE in Madelia by October 17th** to be included in the results.

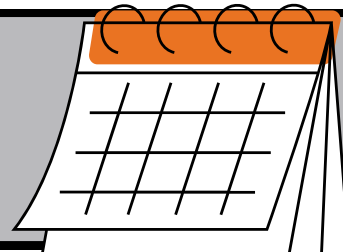
This survey is distributed by Community & Economic Development Associates (CEDA). CEDA provides municipal planning services to communities across the Midwest. The County has contracted with CEDA to conduct the housing study. The results of the survey will be showcased in the final Housing Study in January.

For questions, comments, or concerns, please contact Annie Nichols ([annie.nichols@cedausa.com](mailto:annie.nichols@cedausa.com)), or Brianna Sanders ([brianna.sanders@ci.stjames.mn.us](mailto:brianna.sanders@ci.stjames.mn.us)). Thank you for supporting your community!

## October Calendar

9/8: City Council

9/22: City Council and EDA



## Halloween Haunts to Check Out in 2025

Mark your calendars for Halloween 2025 on Friday, October 31st — Madelia is the place to be for family fun, treats, and spooky adventures!

This year's festivities include:

- 🚗 Trunk or Treat at Faith Lutheran Church
- 🏠 Madelia Health Halloween Fun
- 🍬 Candy Walk at Living Meadows

More details will be shared soon, so stay tuned on the Madelia Chamber website at <https://www.visitmadelia.com/event/trickortreating/>.







# *Vendors Wanted!*

MADELIA LEGION

## *FALL CRAFT SHOW*

### *October 18th, 2025*

8x8 booth  
\$35 fee


10am - 4pm  
Madelia Legion  
36 1<sup>st</sup> St NW

Food  
&  
Drinks!

MADELIA, MN 56062

507-642-8106

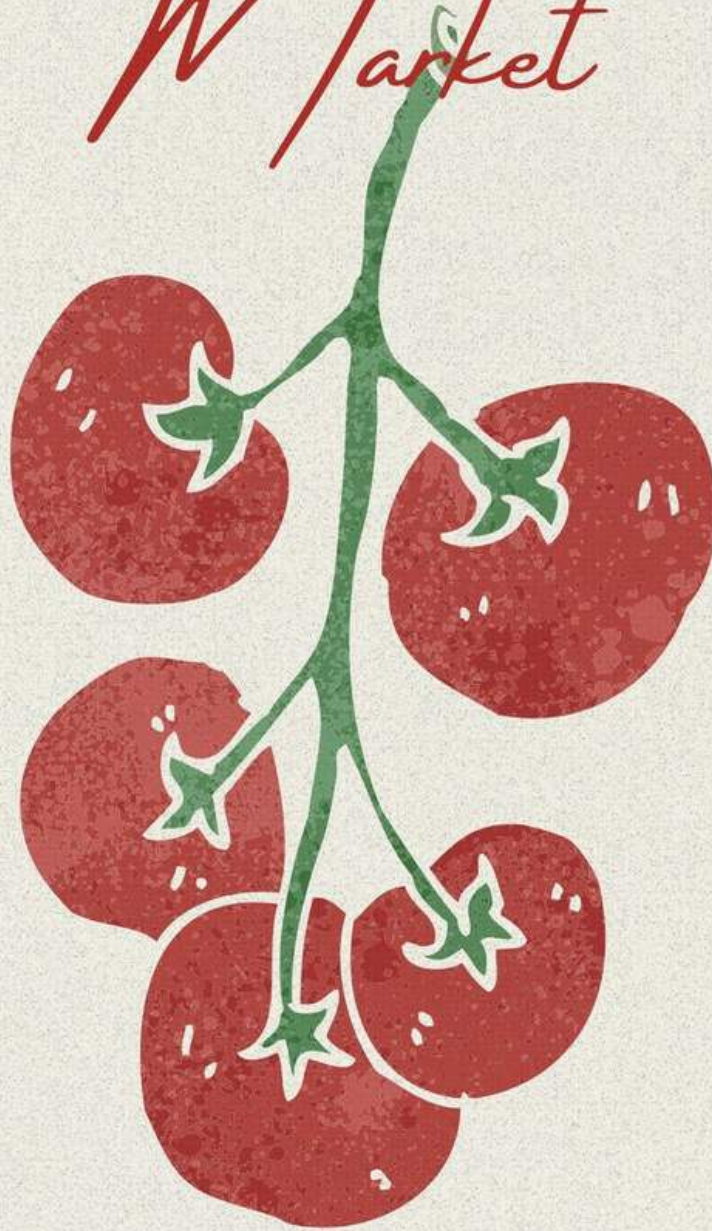
Call or message Brenda  
Madelia19@gmail.com





# FARMERS

*Market*



DISCOVER A VARIETY OF SEASONAL PRODUCE,  
HOMEMADE GOODS, AND HANDCRAFTED ITEMS—ALL  
FROM LOCAL FARMERS AND ARTISANS.

4PM-7PM

PREMIER AUTO PARTS— NAPA  
MADELIA, MN

WEDNSDAYS JUNE —  
OCTOBER