

August 2024

City of Madelia



Watona Park Remains Closed

For the safety of all residents, Watona Park will remain closed while the City completes repair and demolition projects.

The City has determined that the campground will need to be closed for the remainder of the season.

Thank you for your patience as we work to make Watona Park and its amenities safe for the public again.

County Housing Program on the Horizon

Mark your calendars for August 8th to hear about the upcoming county-wide Affordable Housing Aid Program!

This program will provide forgivable loans to qualified homeowners.

This event will feature information about the county program and a St. James program that is also on the horizon.

Questions? Join the St James EDA and the Madelia EDA on August 8th at 12 PM or 6 PM to learn more.

THE ST. JAMES EDA INVITES YOU TO AN INFORMATION SESSION

on the **HOUSING LOAN PROGRAMS**
becoming available

THURSDAY AUGUST 8, 2024
AT 12PM (NOON) AND 6PM

MEETING ROOM AT CITY HALL
1205 6TH AVE SOUTH
ST. JAMES, MN 56081



Contact:
Brianna Sanders
EDA Director
507-375-1289

Primary Elections on August 13th!



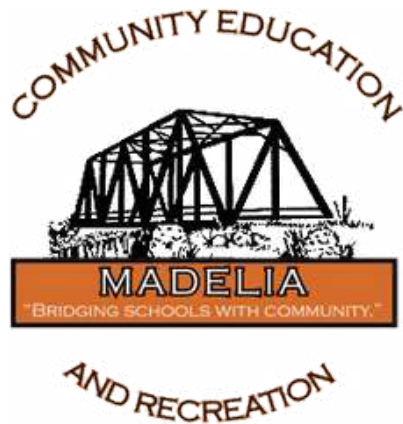
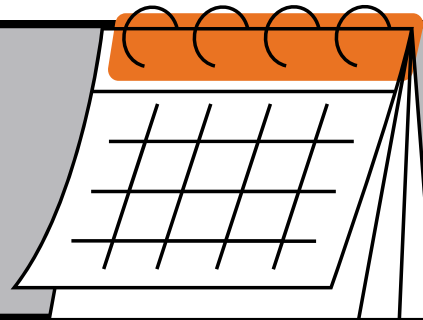
Voting will take place from 7 am to 8 pm at the Madelia City Government Center.

Madelia City Government Center
18 Drew AVE NE
MADELIA, MN 56062

New to voting? Go to <https://www.sos.state.mn.us/elections-voting/election-day-voting> to learn more.

August Calendar

08/12: City Council
08/13: Elections
08/26: City Council and EDA



Madelia CER Seeking Class Proposals

Are you passionate about a hobby or skill? Do you have knowledge that could benefit others? Share it with your community by leading a community education class!

Apply today at <https://www.madelia.k12.mn.us/wp-content/uploads/Community-Education-Instructor-Class-Proposal-Form.pdf>.

Contact Traci Henry with questions at tracihenry@isd837.org

Support Available for Displaced Workers

If you have been affected by the recent closure at Camping World, you can access a comprehensive range of direct services, benefits, training opportunities, and income support through Minnesota Department of Employment and Economic Development's State Rapid Response Team. Get in touch with Laura Dale at laura.dale@state.mn.us to find out more.

